



A TOUCH OF GLASS

Newsletter of the Creative Glass Guild of Queensland December 2023 Edition

Happy holidays!



I want to wish all our members a Merry Christmas and Happy New Year.

I hope there is opportunity to spend time with family and friends. The Christmas spirit has been well and truly alive at the Guild, with many members working on special presents for family and friends.

We've held a number of Christmas workshops and there have been lots of smiling students leaving with their Christmassy glass projects.

Another busy year

It's been a busy year for us at the Guild. The downstairs workshop is being utilised by regular classes, workshops and member sessions. We also have a functioning Beadmaking studio up-

stairs. I'd like to thank all of those involved in making this possible. We have come a long way in the past couple of years.

We held a successful Showcase event at the Mt Coot-tha Auditorium in October. It was lovely to see so many members take the opportunity to be involved.

Over 700 visitors

We had 730 attendees through the doors and over \$20k was taken over the weekend with entry fees and sales.

I talked to many people interested in what we do. After the event we also saw an upturn in class and workshop bookings. The next Showcase is booked for the weekend of 16th and 17th November 2024, so put the date in your calendar and start planning your projects.

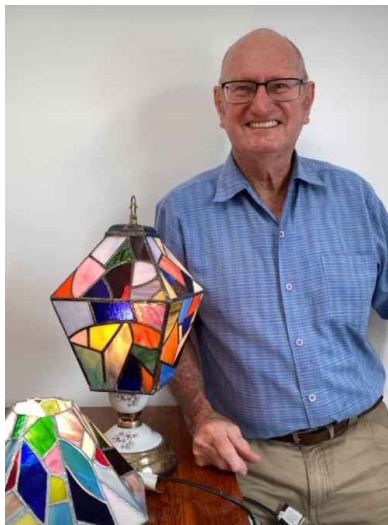
Pictured above: President Chris was pleased to present Lifetime Awards to ten year Guild members (from left) Robyn Wood, April Avis, Gabby Verney and Solvej Patschke. Other Award recipients not pictured were Maureen Boyce, Gary Gilcrest and Cheryl van Eyk. Congrats to all!

I've tendered my resignation from the Management Committee for 2024 due to work and family commitments. There are several volunteer roles to fill at the next Annual General Meeting in March, including the Management Committee.

Calling all volunteers

Please consider how you can help the Guild by volunteering. We are run by our amazing and supportive volunteers, and it would be great to share the load around. Like me, you'll find it a rewarding experience.

Cheers Chris



It's party time!

It was wonderful to see around 50 members and families at our annual Christmas get-together held on Saturday 9th December.

What a bonus to have both floors of the Guild to spread ourselves around, with several members selling their Christmas gift items upstairs, and others gathering in the space downstairs, and lining up for bacon and egg rolls, courtesy of gourmet chefs Anne and Ian.

Thanks to everyone who attended, and especially to those volunteers who helped out and made it a great social catch-up and celebration of the Festive Season.

See you next year, when we do it all again!

www.CreativeCertificates.com



And the Lifetime Awards go to...

Outgoing Creative Glass Guild President Christine Bell took the opportunity at this year's Christmas function to present a number of *Lifetime Awards* to acknowledge members who have kept up their membership for a continuous 10 year period, and have demonstrated a dedication to the Guild and their art.

This year's awards went to Solvej Patschke (pictured top left), April Avis (top right), Robyn Wood (bottom left) and Gabby Verney (bottom right). Other recipients unable to make it to the presentation were Maureen Boyce, Cheryl Van Eyk and Gary Gilcrest.



Oh what a lovely Showcase

The Guild's Creative Glass Showcase held at Mt Coot-tha Gardens Auditorium in October was judged a huge success.

Following Covid distractions, it has been three years since members have had the opportunity to display, sell and demonstrate their unique work and talents.

We welcomed over 730 visitors, who bought 589 pieces of glass art created by members.

Queues at the door

It came as somewhat of a surprise to witness queues at the door to gain entry, lots of fascinated faces, sales a-plenty, and much interest and discussion over the Showcase weekend.

Interested visitors signed up for ten courses over the weekend, with more flowing in afterwards.

Many thanks to all the hard work by volunteers who helped to make the weekend a great success, and special mention to Ken Ede, who designed a new, lightweight, easy-to-erect display stand. Roll on November 2024!



Pictured: Some of our team of volunteers who made the Showcase weekend a great success (clockwise from top): Sue, April and Gim See; Marianne and Catherine; Katrina and Kym; Evert ; Ann and Chris. Well done to all our customer service volunteers and demonstrators.



Published by the Creative Glass Guild of Queensland

64 Fulcher Road, Red Hill Qld
PO Box 14, Ashgrove Qld 4060

General enquiries:
info@creativeglassguild.com.au

Course enquiries:
courses@creativeglassguild.com.au

T: (07) 3369 7322
(phone not always manned)

Website:
www.creativeglassguild.com.au

Workshop/Sales:
Saturdays, 9.00am-12.00pm

General meetings: Bi-monthly on first Monday of the month at 7.00 pm (Notice will be emailed to members).

Management Meetings: Alternate months or earlier if required

That's Queensland all over

A number of Guild members participated and shone in the recent *Quintessentially Queensland* exhibition held in beautiful Maryborough.

Organised by MAANZ (the Mosaic Association of Australia & New Zealand), the presentation celebrated the unique characteristics of Queensland's lifestyle, all in beautiful glass art.

Guild sponsorship offered

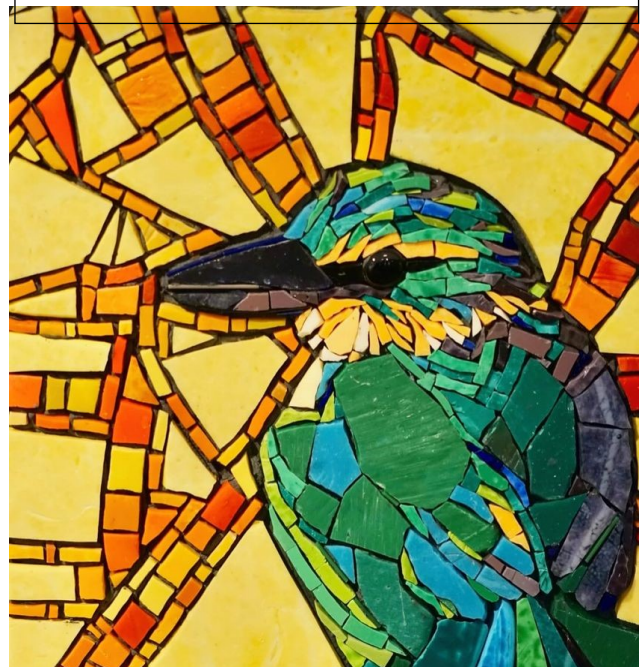
The Guild offered \$500 sponsorship in the form of gift vouchers to go toward art prizes at the exhibition.

Included in the winners' lineup were Guild members Tani Bates, who won the Judges' Choice Award for her splendid 'Sacred Kingfisher', and Catherine Conaty, who received the Unpacking Room Award for her depiction of 'Tallebudgera Creek'.

Congratulations to MAANZ for organising such an innovative exhibition, and well done to all the prizewinners!



Quintessentially Queensland MAANZ coordinator Catherine Conaty is pictured in Maryborough in front of a number of the exhibition's contributions. Catherine's award-winning 'Tallebudgera Creek' is shown to her right. Below is Tani Bates' Judges Choice winning entry 'Sacred Kingfisher'. Below left attending the exhibition are Guild members Catherine, Christine Bell and Denise Olsen, with a selection of the entries behind them.



Chihuly is Australia-bound

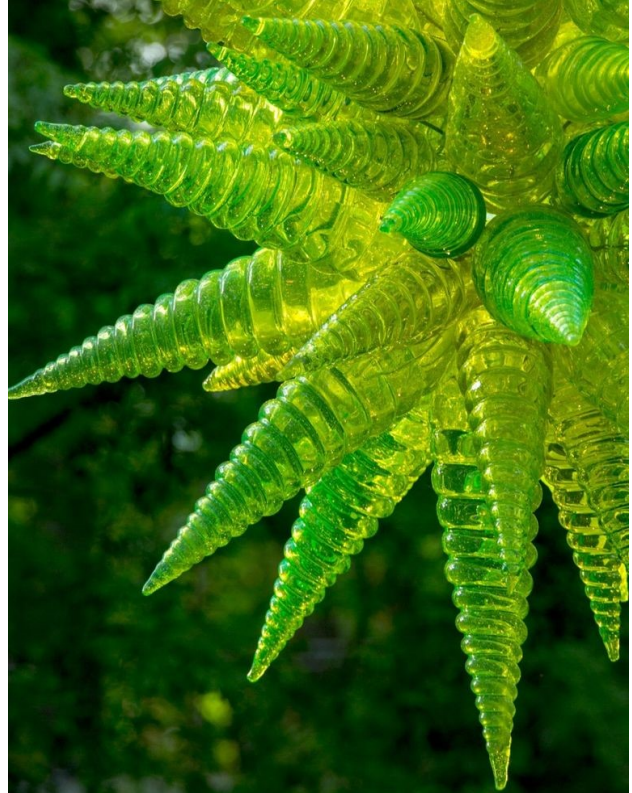
The world's most celebrated contemporary glass artist, Seattle-based Dale Chihuly, has chosen Adelaide Botanic Garden for the first major outdoor exhibition of his work in Australia and the wider southern hemisphere.

Chihuly will present a curated selection of large-scale installations and sculptures in this Australian exclusive exhibition from September 27, 2024, to April 29, 2025.

Known for pushing the limits of the glass material and elevating the medium from craft to fine art, Dale Chihuly started placing installations in conservatories and gardens in 2001, beginning what has become known as his 'Garden Cycle.'

With this new exhibition, Adelaide will become only the third city outside the USA to host a 'Garden Cycle' exhibition, following Kew Gardens in London and Singapore's Gardens by the Bay.

This is a 'must' for all glass lovers, so why not plan a trip to Adelaide in late 2024-early 2025 to see first-hand Dale Chihuly's very dazzling, large-scale sculptures and installations that celebrate glass art in spectacular botanical surroundings.



Dale Chihuly is looking forward to his Australian visit next year, where he says Adelaide Botanic Garden offers many rich colours and textures – the ideal environment for the placement of his work. Pictured above is his artwork 'Ethereal Spring Persians' installed this year in Missouri Botanical Gardens, and below, Chihuly supervises the creation of a spectacular blown glass sculpture in his US studio.



Beading the Odds

The first class of Beginner Glass Beadmakers christened the Guild's new purpose-built Studio during the last week in November.

Post renovation, this project has been almost 18 months in the planning, approval and finally building stages.

Heartfelt thanks to Lyndall for obtaining the permissions required, ordering materials and wrangling contractors.

Also, to all the Guild volunteers who did a mighty job preparing the room, laying the floor, lining the walls, hanging a door as well as painting the room - thank you.

The addition of this workshop will not only promote student safety but will ensure that the Guild can continue to offer torching skills as part of its teaching repertoire.

**Merry Christmas to all,
Vicki Beldan**



Pictured below: the revitalised beadroom comes together, complete with new extraction fans. This was the old glass storage room pre-renovation. The workshop is a welcome addition to the Guild's facilities, offering a safe and practical teaching facility.



'Tis the season to be decorative

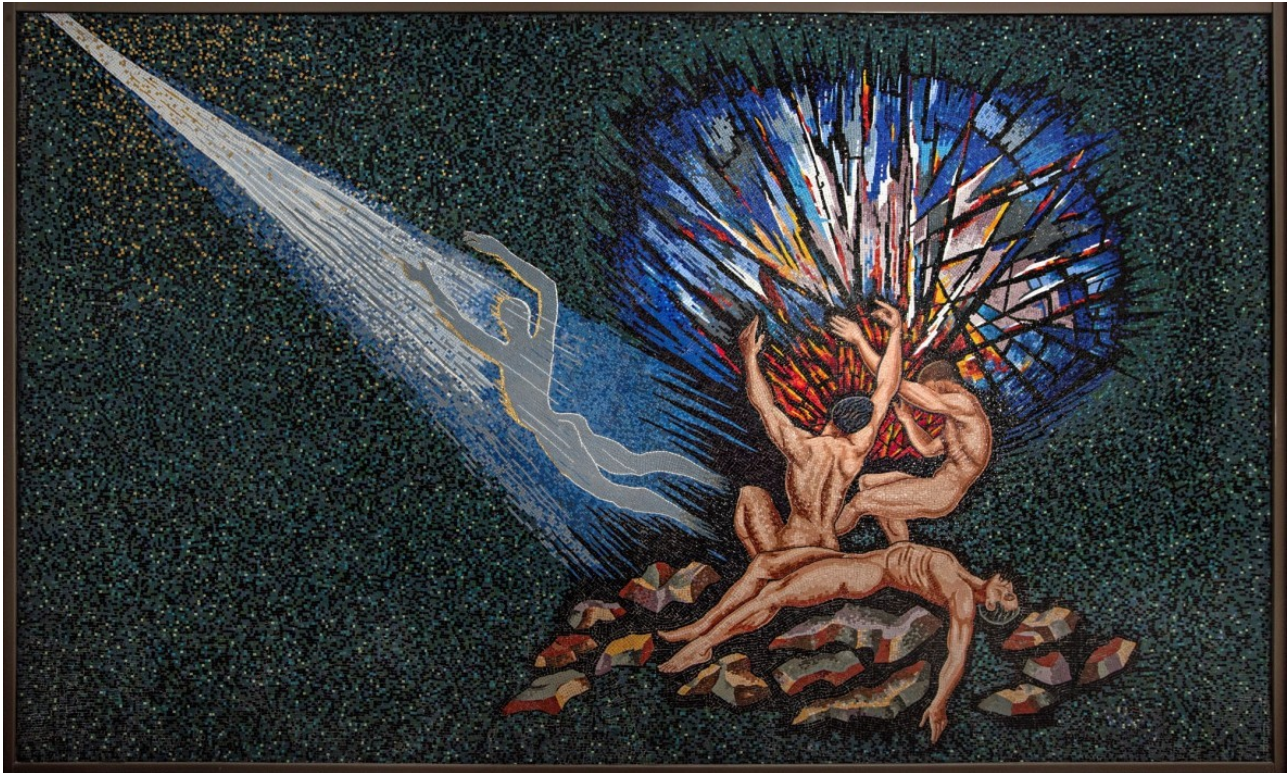
Getting into the Christmas spirit with some glassy gift ideas, Christine Bell once again hosted a Fused Glass Christmas Decorations Workshop for an enthusiastic group of Guild members.

Participants chose from a number of themed designs to work on, or they brought their own design ideas with them.

And what a festive feast – lots of creative Christmas decorations which participants were able to take home to decorate the Christmas tree or save as special gifts for family and friends.



Amazing Memorial Mosaic on show



Guild members will have a unique opportunity to view an extraordinary mosaic creation early next year.

Guild mosaicist, Catherine Conaty, will introduce the magnificent Anzac Square Memorial Mosaic by Don Ross – a tale of extraordinary creativity, ambition, passion and commitment.

Catherine will discuss the creation, construction, re-allocation and preservation of this astonishing artwork that has been especially designed to endure for future generations.

The Anzac Square WWII Memorial Gallery space became home to the large scale glass mural in 1984, designed by Don Ross, a former Brisbane dentist and artist.

Commissioned as a memorial to World War II, the mosaic contains over 140,000 small enamelled glass tiles, and has been described as *'an abstract and allegorical depiction of four male figures, alluding to death and redemption, and symbolic of the universal sacrifices of men in war'*.

Rarely available for public viewing, the mosaic remains an important memorial and part of Anzac Square's history, and is revealed and exhibited annually to coincide with the artist's birthday in January.

Catherine's presentation takes place from 10.30am-11.30am on Sunday 14 January at Anzac Square Memorial Galleries in Brisbane city.

Admission is free, but bookings are essential. Contact Anzac Square Memorial Galleries, on 0466 922 259 to book.

Picture perfect

I'm new to fusing, and made this piece for my friend from a picture she took on a recent holiday.

I am proud of the result, and really wanted to share it with other Guild members. Incidentally, my friend loved it!

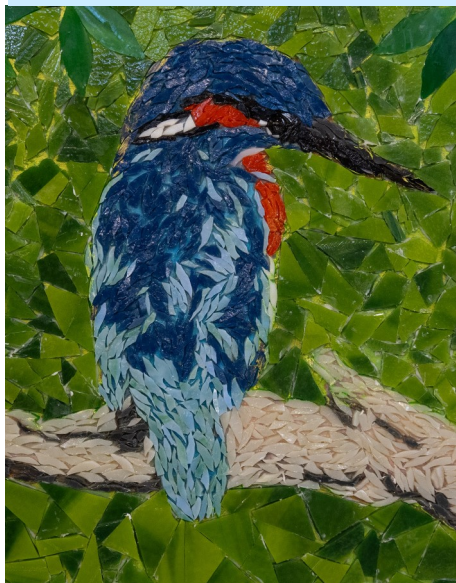
The scene is typical of a lonely western Queensland road, or perhaps it's in Central Australia. Bottom left shows the piece going into the kiln, and on the right, the finished article.

Best wishes, Sarah Jayne





Things are slowing down around the Guild for our Christmas break, but there has been plenty of activity leading up to the Festive Season. Pictured (clockwise from top left): 1. Beginner mosaicers Suzy, Suzy and Yvana show off their impressive pieces with tutor Catherine. 2. Evert's spectacular copperfoiled cockatoo. 3. April's glass on glass mosaic was inspired by Vincent van Gogh's 'Starry Night' masterpiece. 4. Tahnya's black cat leadlight window is a nod to all black rescue cats. 5. Karen has created a very intricate mosaic blue kingfisher. 6. Ian's Cootamundra wattle mosaic wall tile, and Yvana's colourful crazy village mosaic.

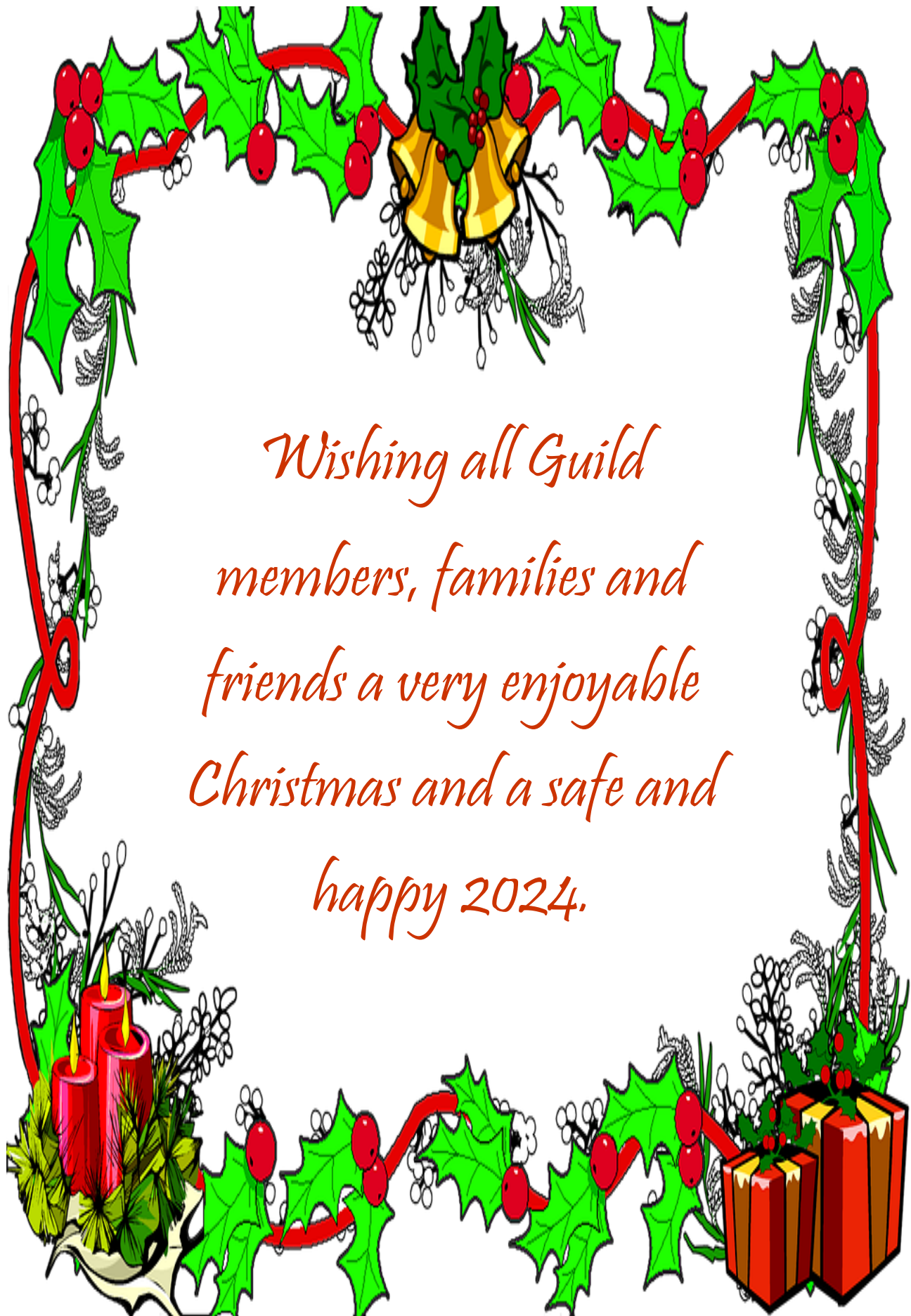




Dates Diary Dates

- The Guild will be closed over the holiday period from Monday 25 December 2023 until Sunday 7 January 2024. (Keyholders please note: there will be no access to the Guild during the first week of January during stocktake. No stock should be bought, touched or moved from where Denise puts it!)
- Guild opening hours will remain the same throughout school holidays and into 2024 (or until otherwise advised!): Monday 9am-3pm & 4-8pm; Wednesday 9am-2pm; Friday & Saturday 9am-12pm.
- We're not far off our AGM, to be held on a day to be advised in March 2024. Our current President Christine Bell won't be continuing next year, so we will soon be seeking new committee members - could it be you?
- Next year's Glass Guild Showcase dates are set for 15-17 November 2024 - that's much closer to Christmas, so start working on your pieces to sell!
- Our 2024 courses are all available on the website. Book in fast if you're ready to explore some new skills in 2024.
- Catherine Conaty will be deep diving into the history and significance of Don Ross' mosaic in ANZAC Square on 14 January. Book on 0466 922 259 for free admission.

Merry Christmas and happy holidays! See you back at the Guild in 2024.



*Wishing all Guild
members, families and
friends a very enjoyable
Christmas and a safe and
happy 2024.*