

A TOUCH OF GLASS

Newsletter of the Creative Glass Guild of Queensland June 2019 Edition

What the President said

The past few months have seen a lot of activity around the Guild, and we are coming up to a very busy time of year for members.

Most of you will be aware that the Guild's roof was replaced over the Easter break. The roof was estimated to be over 60 years old and needed repair.

Along with the roof, new awnings were erected over the back windows and the windows along both sides of the building.

Keeping our cool

In addition, the guttering was replaced, and two ventilators were installed on the roof along with an insulation blanket under the new roof to assist in keeping the Guild cooler in the summer months.

Lastly, while the roof was off, a number of electrical connections were upgraded and several external lights were fitted with LED globes to brighten our lives.

Thank you, BCC

Fortunately, we received a Brisbane City Council grant of \$24,324 toward the completion of the works. The total outlay was \$30,142, so the cost to the Guild was \$5,818 – money well spent!

Our costs were further reduced by some members volunteering to paint the awning frames prior



to their installation. We are most thankful for their valuable contribution.

The increased hours that the Guild is open have proven popular. A big thanks to the members who have volunteered to extend our opening hours.

Holiday openings

The Guild will be open on some days (Mon/Wed/Fri) over the two week school holiday period from July 1 to July 13. Please check the Guild's calendar for the most up-to-date opening hours information.

The official unveiling of the fantastic new mosaic wall will take place on Sunday June 30 at 2.30 pm. Cr Peter Matic from the Paddington Ward will be in attendance to do the honours.

Also, at that time we will celebrate the Guild's 40th birthday, complete with afternoon tea. Family and friends are welcome to attend, too – but please RSVP to the Guild ASAP for catering purposes.

Mapping our future

A follow-up discussion regarding the future directions for our Guild will be held on Saturday 17 August. Afternoon tea will be served at the conclusion of the meeting. All members are encouraged to attend to help map out the Guild's future.

To showcase our many talented leadlighters to the public, the management committee is calling for designs to replace the windows in the front of the Guild.

Cont on page 2...

Diary Dates

Wall mosaic grand opening:
2.30pm, Sunday 30 June

Next general meeting:
7.00pm, Monday 1 July

Guild closing days for
Expo preparation:
Wed 17 July—Fri 19 July

Brisbane Glass Expo
(our Exhibition): Sat 20 July
and Sun 21 July

Future Directions meeting:
1.30pm-3.30pm Sat 17 August

President's Report

Cont from Page 1

If you have a flair for designing or if you know of a good example in one of the many books in our library or you have a picture or website that you can share, please let me know.

Once a window design is approved, then we will call for volunteers to commence the project. There is no time frame for the windows to be completed but if we can have design ideas by early July, that would be helpful.

Kiln care, please

When using the kilns, please be very careful in placing and removing objects. Unfortunately, one of the temperature probes had to be replaced recently and it was an expensive exercise.

All the kilns had a service this week and are in good condition. Unfortunately, the compressor for the sand blaster is leaking oil, and we are seeking quotes for its replacement or repair.

In the meantime, the sand blaster can still be used, but

ensure that there is oil in the compressor before operating.

Let's go, Expo

Finally, our annual exhibition, now called the Brisbane Glass Expo, will be held on the weekend of July 20 and 21.

We decided to make it gold coin entry this year to attract more people through the door, and hopefully interest them in our various activities, sign up for courses, and encourage them to buy what's on display.

Best wishes, Kevin



Awnings have been fitted over the back and side windows at our Fulcher Road premises to keep the workshops cooler and weatherproof.

Extended opening hours

Following requests from members, the Guild has extended its opening days and hours for members to work on their projects.

In addition to the current Monday, Wednesday, Friday and Saturday morning time slots, a roster has been established for opening our Red Hill premises from 9.00am to 12.00pm on Sundays.

We are also trialling an opening from 8.00pm -11.00pm every second Friday, and we would like to hear from any member who could open up from 6.00pm on a Friday.

Thank you to Warren Horne, Peta Elms and Charlotte Thompson for volunteering to supervise, and John Doran as backup.

These new times are on trial until the end of June, so it's up to members to support them. Check out the Calendar on the Guild website to confirm opening times before you visit.

**Published by the
Creative Glass Guild
of Queensland**

64 Fulcher Road, Red Hill Qld
PO Box 14, Ashgrove Qld 4060

General enquiries:
info@creativeglassguild.com.au

Course enquiries:
courses@creativeglassguild.com.au

T: (07) 3369 7322
(phone not always manned)

Website:
www.creativeglassguild.com.au

Workshop/Sales:
Saturdays, 9.00am-12.00pm

General meetings: Bi-monthly on first
Monday of the month at 7.00 pm
(Notice will be emailed to members).

Introducing the Brisbane Glass Expo

This year, to celebrate the Guild's 40th anniversary, our annual Exhibition is taking on a new title - *the Brisbane Glass Expo*.

It will be held on the weekend of 20-21 July, and what's more, we're making it entry by donation of a gold coin this year to encourage bigger attendances and more sales!

Our Expo raffles will be special too, with three spectacular prizes to be won— a Tiffany lamp made by Barry Richters, a beautiful necklace from Vicki Beldan and a red kaleidoscope made especially for the Expo by Ken Ede.

Please do your bit by selling raffle tickets to friends, family, work-mates etc, as this will be one way we can help cover costs.

Volunteers needed

Opportunities to help set up and run the Expo have been posted on the whiteboard at the Guild.

Even if you can only contribute a few hours, please volunteer to be part of the energetic and dedicated team that sets up, staffs, manages and breaks down the Expo each year.

If you are not able to come into the Guild, email us at info@creativeglassguild.com.au and we will contact you.

Of course, your family members and friends are very welcome to help, particularly for the Expo setup and breakdown.

It's your Guild, so don't leave it to the dedicated few to do all the heavy lifting!

Special Theme Award

We hope work is progressing well on your project for this year's

Special Theme Award, in the category of 'Celebration'.

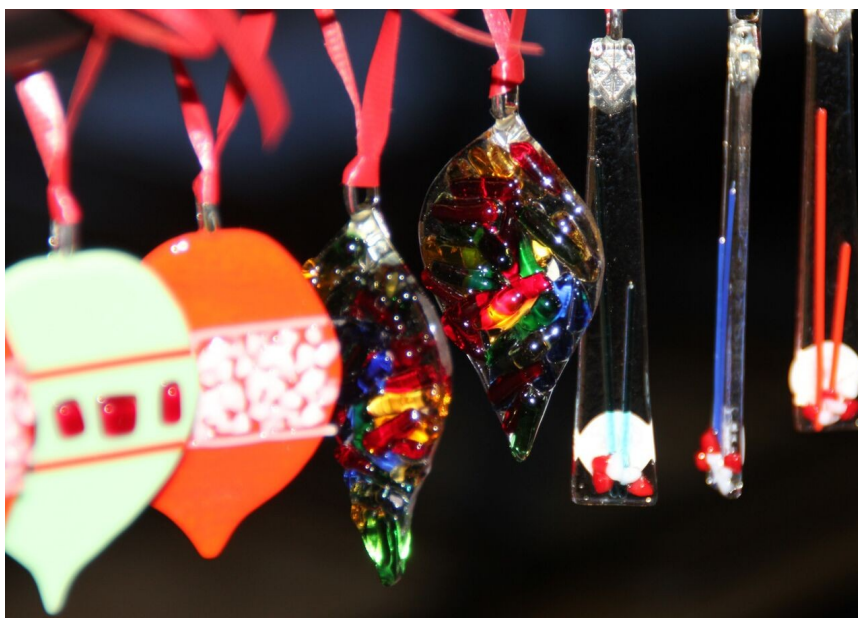
Judging will be based on the following five criteria: *beauty, skill, inherent meaning, uniqueness and fulfilled intent*.

Request information kit

Any members who wish to display/sell their wares at this year's Exhibition can request an Information Kit by emailing info@creativeglassguild.com.au

We are also making a special plea to anyone who has completed a leadlight project in the past twelve months.

If your leadlight is not yet installed (or easy to uninstall), we would absolutely love you to put it on display. We struggle every year to find new and different leadlights made by members to display at the event, so your help would be greatly appreciated.



A small task group has been creating Christmas decorations like these for sale at the Guild's 2019 Expo. The Committee has agreed to entry by gold coin this year to encourage more visitors, and optimise sales for exhibitors.

Guild closing days

Please note that the Guild will be closed for normal business from Wed 17 July -Fri 19 July to allow us to fully prepare for the Expo.

For those new to the Guild, please note that we are interested in displaying works from all skill levels of the various techniques we teach at the Guild.

Calling all beginners

Works by beginners are often those that inspire people to try their first course at the Guild.

The best advertising for the annual Expo is word-of-mouth.

You can help by telling friends and family, and displaying our posters at your workplace and in your local area—eg in shop windows, community noticeboards, libraries etc. Posters will be available soon.

There is plenty to celebrate in our 40th year, so let's make this year's event something special. With your help, we can look forward to a very enjoyable and successful Brisbane Glass Expo!

Chris 'walks the line' in Ecuador

During my South American pilgrimage last year looking for fantastic mosaics and stained glass, I visited Quito, Ecuador's capital, which sits high in the foothills of the Andes.

Ecuador is located on the equator, which was a lot of fun, as we got to 'walk the line'!



Chris climbed the bell tower to take in the views across Quito to the Andes.

Quito is constructed on the foundations of an ancient Incan city, and is known for its well-preserved Spanish colonial centre, rich with 16th and 17th-century churches and others blending European, Moorish and indigenous styles.

Amazing windows

These include the *Basilica del Voto Nacional*, the largest neo-Gothic church in the Americas, which had the most amazing windows and a pretty impressive mosaic.

I climbed to the top of the church towers on a crazy set of ladders for an amazing view over the city.

Outside, the gargoyles of the *Basilica del Voto Nacional* all represent animals endemic to Ecuador, including iguanas, tortoises, armadillos and condors.

It took more than 30 years to build the basilica, with the first mass and ringing of the bells taking place in 1924. But it wasn't until 1988 that the church was consecrated and finally inaugurated.

However, technically speaking, the *Basilica del Voto Nacional* has never been completed, at least not officially. According to local legend, this permanent state of incompleteness is due to a fairly weighty premise: if the basilica is ever completed, the world will come to an end.

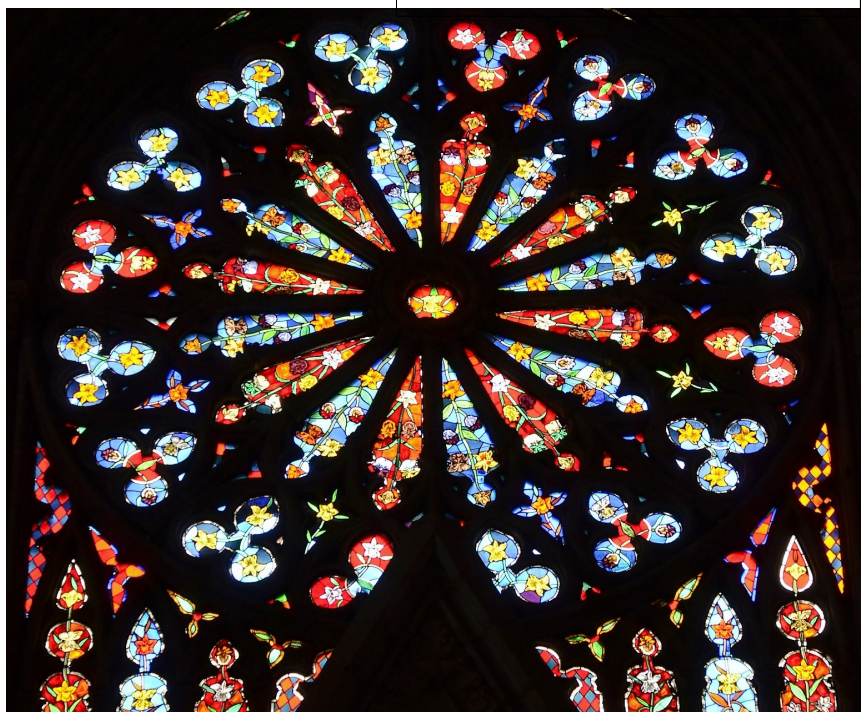
I'm sure the local population will be praying that construction will go on, and on, and on...

Christine Bell



Pictured (above): One of the beautiful windows of Quito's *Basilica del Voto Nacional*, the largest neo-Gothic church in the Americas.

Below: The spectacular rose window in the west transept captures the eye and the imagination with its exuberance of colour and fine detail.



Sylvia's 'open house' a treat for members

On 26 May, 15 of our members took a bus ride to visit Guild member Sylvia Free at her home studio in Meringandan West near Toowoomba.

Sylvia showed us through her three bay shed studio, and awed us with the tools of her trade –a lapidary grinder, glass cutting saw, a mega kiln, buckets of frit, and more slumping molds than many glass supply shops would stock.

Sylvia demonstrated how she achieves those super shiny glass edges she loves. And we toured her garden which is delightfully decorated with her hand crafted glass mushrooms... and the scent of the roses was amazing!

What better way to display your work than to pile it high with food.

Thanks to Carl for the delicious feast for lunch, and to Sylvia for creating such a wonderful display to inspire us.

We topped off the day with a visit to the Highfields Village Green which includes the MET Galleries where Sylvia and another Guild member, Margaret Shaw, sell their work.



Sylvia Free shows off her 'mega' kiln and a host of slumping molds which would be the envy of many glass supply shops.

We would love to do other group visits, so if you have an idea please let us know.

Katrina Jackson



Ken Ede has amassed an armada of kaleidoscopes, and is keen to share his skills in a two day course to show how it's done. Interested members will need to have completed a beginners' leadlighting/copperfoiling course.

Want to make a cool kaleidoscope?

The Guild is seeking expressions of interest from members for a two day intermediate copper-foiling course to make a colourful kaleidoscope.

Co-ordinator Ked Ede will take you through the steps to create a kaleidoscope in either a standard or biplane design.

If you're keen, let us know at info@creativeglassguild.com.au

See how it's done and ask all the questions at this year's Expo, when Ken will be creating a kaleidoscope over the 20-21 July weekend.

Caro's brilliant Glasstress experience

When I travelled to Venice for the Venice Biennale in 2017, I expected to be challenged.

But quite frankly, while it blew my mind, the Glasstress Exhibition added an extra, fresh dimension to my expectations and I couldn't have had a more brilliant combined experience.

Glasstress is one of those exhibitions we rarely hear about here in Australia, but if you're considering heading to Venice Biennale some time soon - especially this year - you're in for a huge treat.

As we all know, Venice is known for its canals, culture, food and architecture, but in particular, its glassmaking with manufacturing origins going as far back as the Roman Empire.

Murano glass masters

The Venetians were known for their highly collectable trade beads and of course, their long history of glass-making famously from the island of Murano.

If you're visiting the Venice Biennale, one of the biggest attractions is the Glasstress Exhibition created by glass impresario Adriano Berengo, who founded it in 2009 as a collateral event of the Biennale.

This side event has continued to grow and it's now regarded as the world's leading showcase for the collaborative work of contemporary artists and designers with Berengo Studio's Muranese glass masters.

Amazing artists

In 2017 the exhibition, located both in Palazzo Franchetti on the main Island as well as Berengo Studios on Murano, featured so many amazing artists, but in particular, an artist well known to most Australians - Chinese artist and activist Ai Weiwei.

Guild secretary Caroline Page is planning a visit to the 2019 Venice Biennale to again immerse herself in Glasstress, the world's leading showcase for contemporary glass artwork. Here's her story...

His stunning, giant chandelier of surveillance cameras and hands 'flipping the bird' at them (the Chinese government) certainly captured our attention and his message certainly wasn't missed by anyone lucky enough to see it.

Versatility on show

The glasswork featured at Glasstress varied dramatically and demonstrated just how versatile glass really is.

At the main exhibition space in the middle of Venice, we were treated to the haunting and subtle work of Iraqi artist Halim Al-Karim, while at the same time we enjoyed equally skilled but highly realistic work from Charles Avery and Dike Blair.

Cont next page...



This example of a woman's torso at the 2017 Glasstress Exhibition is typical of the exciting range of exhibits which varied dramatically, and demonstrated the amazing versatility of glass as a creative medium.



Cont from page 6

Highly creative works like Jan Fabre's *Holy Dung Beetle with Laurel Tree* and Josepha Gasch-Muche's fur-like look in her work were reminders of how fine glass can change your perception of such a sharp material.

The 2019 event brings together a new lineup of leading contemporary artists from Europe, the United States, Latin America, India, and China in an ambitious exhibition exploring the endless creative possibilities of glass.

On your bucket list

I'll be hoping to head back again this year – I think it's become an addiction – and I can't recommend any more highly that you stick this one on your bucket list if you haven't already. This year is set to be a show-stopper.

The 2019 Venice Biennale, with a theme of *'May You Live In Interesting Times'*, is open to the public from Saturday 11 May to Sunday 24 November 2019.



Pictured (top): Chinese activist and artist Ai Weiwei created a stunning, giant glass chandelier of surveillance cameras to protest personal intrusion by the Chinese Government.

Above right: This giant hand 'flipping the bird' at the Chinese government was a controversial element of *Glasstress 2017*, which captured the attention of its international audience.

Above left: This year, to celebrate 10 years of *Glasstress* and 30 years of Berengo Studio, the exhibition goes back to its historical roots on the island of Murano, Venice.

The 2019 event brings together a new lineup of leading contemporary artists from Europe, the United States, Latin America, India, and China in an ambitious exhibition exploring the endless creative possibilities of glass.

Special Invite

Don't miss the Grand Opening of our mosaic wall mural at 2.30pm on Sunday 30th June at 64 Fulcher Road, Red Hill.

All members, family members and friends are invited to the unveiling by Cr Peter Matic, followed by afternoon tea.

Please RSVP by 22nd June to info@creativeglassguild.com.au

Dordrecht guilds live on in glass

During a recent holiday in Holland to catch up with family members, I took some time out to visit Dordrecht Minster, or the Church of our Dear Lady, the largest church in the Netherlands.

Dordrecht is the oldest city in Holland, and its Minster features a series of stained glass windows in the St George's Chapel, dedicated to the historical Guilds of the City of Dordrecht. (pictured right).

Although the church was built between 1285 and 1470, the windows are quite modern, having been created and installed in 2006.

Celebration of Guilds

The Guild windows, or Gildenrame celebrate the city's various guilds, the powerful organisations of people of the same occupation, which had a monopoly on a trade in a certain town.

Looking at the stained glass windows of the church, it is possible to see a number of different scenes representing the history of Dordrecht.

Another interesting feature of the Minster is its 65 metre high tower, which contains a carillon with 67 bells, including one weighing 9830kg.

The Minster also features an unfinished octagonal tower, which was to be over 100 metres high.

Holland's leaning tower

However, halfway through the construction, it was noticed that the tower had begun to develop a significant lean.

Like the Leaning Tower of Pisa, the ground below the tower was too soft to support such a heavy structure, and the tower had begun to tilt dangerously.

Despite the fact that it remained unfinished, the tower was still the tallest structure in Dordrecht for almost 500 years.

Evert Van der Waal



LOST & FOUND: The leadlight pictured below '*Hallowed be thy name*' was displayed at the Guild's 2017 Exhibition, and we haven't been able to find its owner. If it's yours, please come and claim it at our Red Hill headquarters.



Evert takes in the Dutch masters

While I was visiting Holland, I took the time to reacquaint myself with the Rijksmuseum, a Dutch national museum dedicated to arts and history.

It's located in Amsterdam's Museum Square - close by to the famous Van Gogh Museum.

In particular, at the end of the museum's Great Hall called 'de Eregalerij', there are a series of high windows of beautiful stained glass representing famous Dutch art, artists, crafts and craftsmen.

The period in which these windows were made (the early 1800's) was a time when glass art made a comeback after its decline during the reformation, baroque and rococo periods.

Much about glass painting and blowing of coloured glass had to be relearned at that time.

English artist William Francis Dixon won a competition for the commission of the Rijksmuseum's stained glass in 1882, in what seems to have been the start of his wider European career as a master stained glass window designer.

Regards, Evert

Pictured (right): Guild member Evert Van der Waal admires 'Rembrandt', one of a series of beautiful stained glass windows depicting famous Dutch artists, arts and craftsmen in Amsterdam's Rijksmuseum, which is dedicated to Dutch art and history.



Membership changes in place

In the interests of streamlining the Guild's membership application and processing procedures, the following new membership provisions will apply immediately:

- Trial memberships will be removed (current trials to be finished, and no further trials promoted or received)
- The \$50 administration fee will be removed. Membership renewals will become due once a year (annually on 1 February)
- Fees for new memberships received throughout the year will be pro-rata'd
- All memberships due in June and September 2019 will be pro-rata'd this year (ie \$50 and \$25 respectively)
- Those already paid for the year ahead will pay pro-rata membership to accommodate fees already paid
- Renewals and new memberships from 2020 will be \$100 (it has been 8 years since our last fee increase)
- Lifetime memberships remain at \$50 (for those with continuous membership of 10 years+)
- A new category 'Guild Masters' will be introduced for those who have significantly contributed to the Guild and its members over an extended period of time.
- You will be contacted individually by email when your membership is due.



Guess who's been holidaying in France and checking out Europe's striking leadlights and stained glass? It's none other than Jenny Keys, our leadlighting & copperfoiling tutor, who has been keeping members up to date with her exploits via the Guild's Facebook pages.

She discovered these wonderful leadlight panels at the champagne wine estate of Champagne F. Bergeronneau-Marion, located in the heart of Ville-Dommange, a famous village in the Montagne de Reims.

Says Jenny: "I found this beautiful stained glass in a vineyard in Champagne country. I only went to see the stained glass ... slight lie ... the champagne was fabulous too!"



Edvard says it with flowers

We recently visited Bergen, a city on the south-west coast of Norway known for its fjords, colourful wooden houses and birthplace of renowned music composer, Edvard Grieg.

Just a few kilometres outside Bergen is Grieg's house, where he composed most of his classical repertoire in a hut overlooking a spectacular fjord.

Accolades and flowers

Grieg performed at the great European concert halls in the late 19th century, and received accolades and flowers everywhere he went.

The story goes that Grieg never remembered to bring flowers home to his wife Nina.

So to stop getting into trouble any more, he commissioned a rose leadlight window so his wife would always have flowers to look at.

What a romantic notion from a Romantic-era composer!

I took a photo of the window, as well as a view of the garden from the same room, looking out to the fjord.

The leadlight window was a standout feature of the house, but it was hard to compete with the tulips in the garden.

Paul Esdaile



When Edvard Grieg's wife complained he never brought her flowers, he compensated by creating a rose leadlight window and a tulip garden in their Bergen home.



Beadmakers unite!

Here's a happy team of keen glass beadmaking students blowing glass shards to decorate their beads, under the direction of the Guild's beadmaking tutor, Vicki Beldan.

Vicki is encouraging beadmakers to attend next year's global gathering of beadmakers, at the International Society of Beadmakers' big event, which is held annually.

In 2020, The Gathering will be held in Las Vegas, Nevada, from March 31 to 5 April.

The theme is *'Unite, Share & Inspire'* - so go to it!



Around the Guild

The Guild has been a hive of creative activity in recent months, with workshops, classes and individual projects keeping members busy.

Here's a snapshot of what's been happening (clockwise, from above):

1. Emma's elegant bathroom leadlight—the 40th window she has made
2. April's rainbow lorikeet will find a place on the new mosaic wall mural
3. Valda's cute glass-on-glass mosaic of her toy poodle 'Jedda'
4. Chris's copperfoiled hummingbird, resplendent on a leafy stand
5. A section of the mosaic mural adorning our wall with the Broncos
6. Layla combined her two passions, music and mosaics, in this guitar

